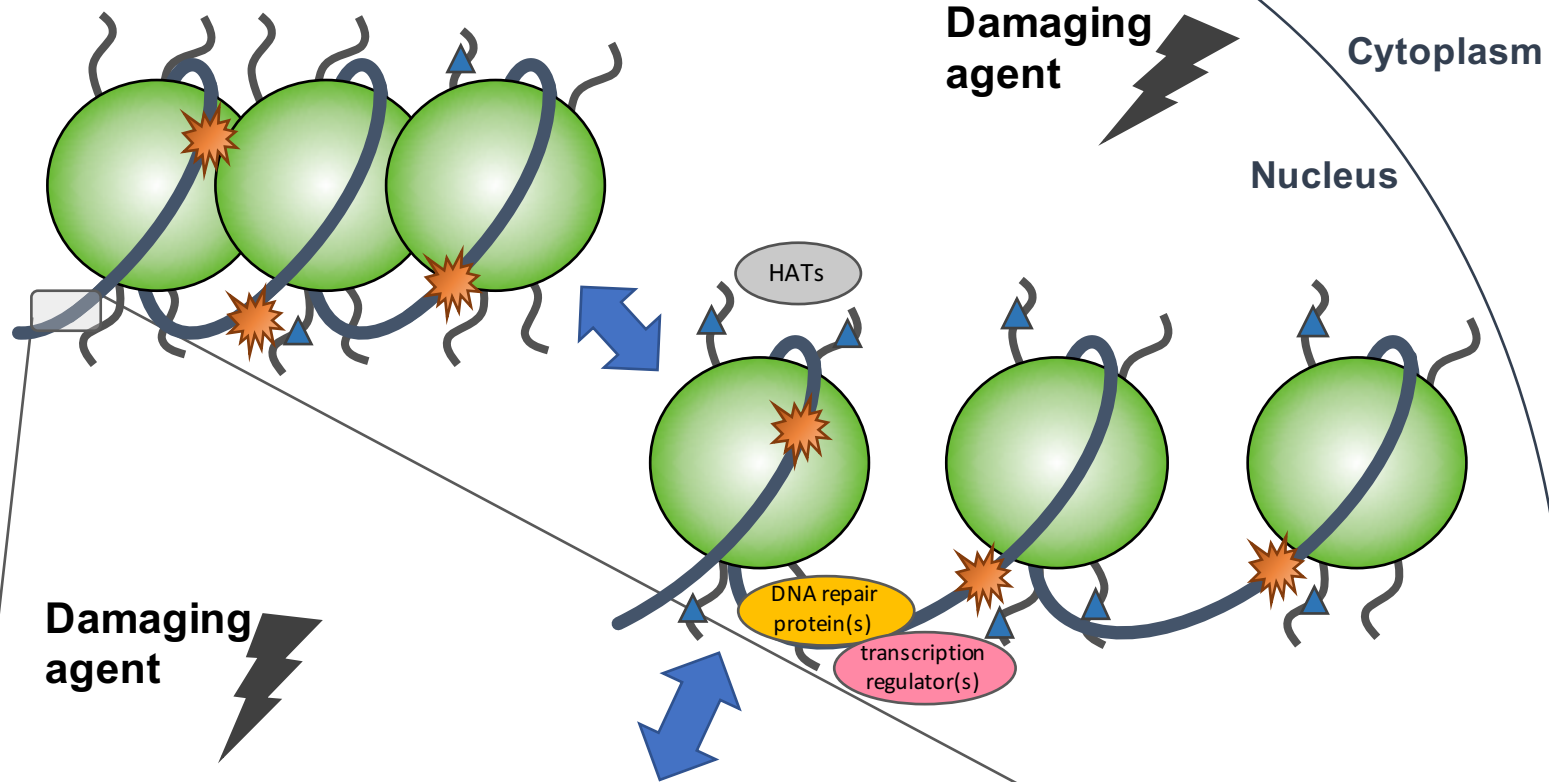
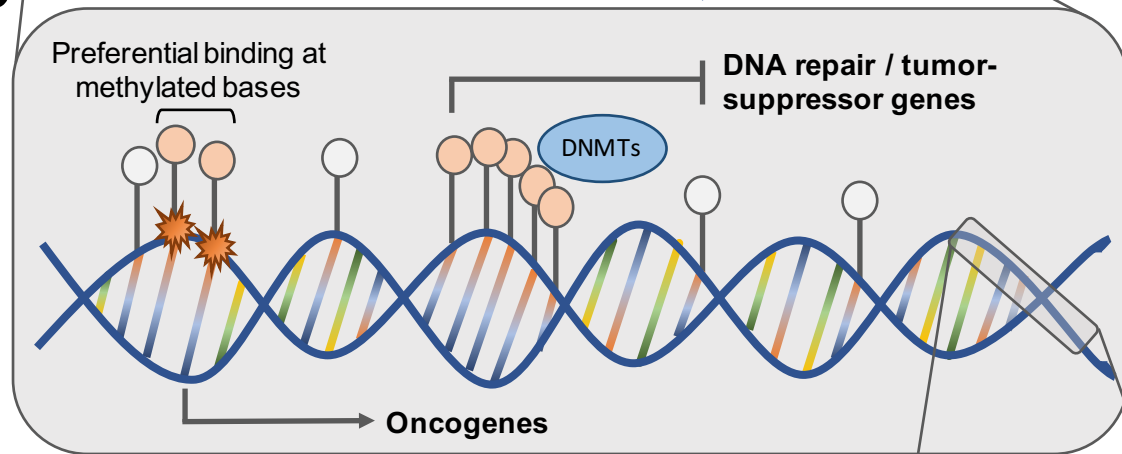
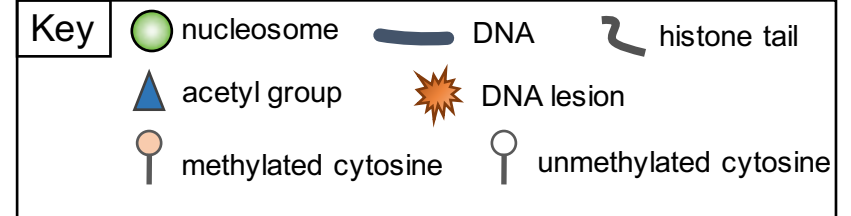


A**B****C****A: Histone modifications**

- Impact chromatin structure and DNA accessibility
- Influence recruitment of DNA repair enzymes/proteins and complexes
- Influence DNA methylation levels

B: DNA methylation

- Increase binding of DNA-reactive chemicals/intermediates
- DNMT-mediated regulation of cell cycle genes in response to DNA damage
- Influence chromatin structure and DNA accessibility

C: Alterations to miRNA expression

- Regulation of DNA damage repair-related genes
- Regulation of cell cycle mediator genes

